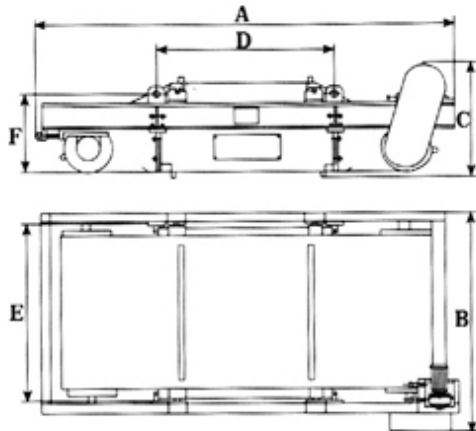


# Magnetic Separator



## YXY-K Light-duty Self-cleaning Permanent Magnetic Separators



Suitable for concrete recycling, construction, demolition and waste processing.

3mm or 5mm stainless steel cladding belt.

Heavy-duty drive package.

Withstand worst working conditions.

### Technical Parameters of RCY-K

Item Spec. Model	Belt Width mm	Belt velocity Adaptive m/s	Suspension height Rated(SHR) H mm	Catching ability kg	Working style	Driven power kw	Outline dimensions mm						Weight kg
							A	B	C	D	E	F	
YXY-K50	500	≤4.5	150	0.1~35	Continuously	1.5	1970	903	722	620	647	451	750
YXY-K65	650		200			1.5	2110	1053	722	770	797	451	930
YXY-K80	800		250			2.2	2320	1253	722	970	997	451	1240
YXY-K100	1000		300			3.0	2690	1453	803	1120	1190	451	190
YXY-K120	1200		350			4.0	2890	1713	868	1320	1430	516	2542
YXY-K140	1400		400			4.0	3090	1913	868	1520	1630	516	3380